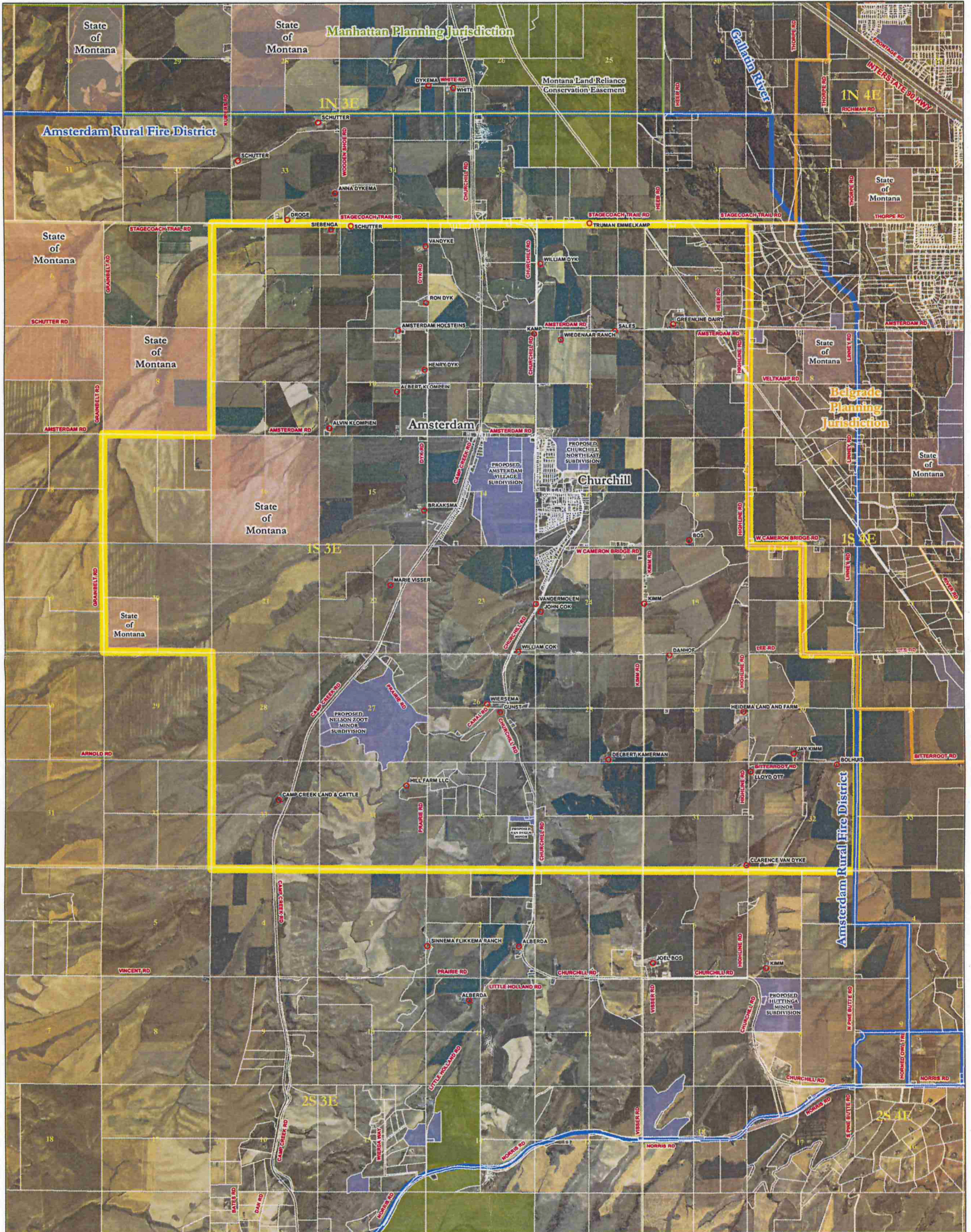


Proposed Amsterdam-Churchill Neighborhood Planning Area

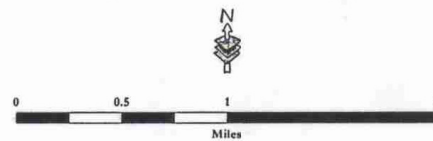
Gallatin County, MT

DRAFT
12/14/2007



NOTE: This map is a visual representation only and does not represent a survey. No liability is assumed as to the accuracy of the data delineated hereon. Aerial imagery from 2005 National Agriculture Imagery Program.

- | | |
|-------------------------------------------------------------|------------------------------------------------|
| Parcels | State Lands |
| Incorporated Cities and Towns | Federal Lands |
| Amsterdam Rural Fire District | Conservation Easements |
| Belgrade Jurisdictional Boundary | Open Space and Parks |
| Manhattan Jurisdictional Boundary | Proposed Subdivisions Currently Pending Review |
| Proposed Amsterdam Churchill Neighborhood Planning Boundary | Farmsteads |



MAP PREPARED BY
GALLATIN COUNTY, MT
GIS DEPARTMENT AND
PLANNING DEPARTMENT
03/12/2007 ; 12/14/2007

bw_20071214_amsterdam_churchill_area_farmsteads_2005_NAIP.mxd